

## PRESS RELEASE

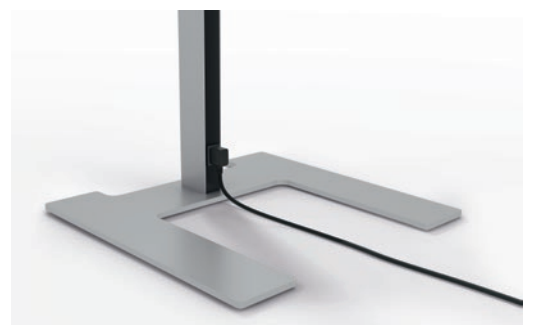
### DURABLE presents LUCTRA® VITAWORK® UP: a new LED floor lamp for flexible, standard-compliant and sustainable office lighting

**Iserlohn, 20.05.2025:** With the new LUCTRA® VITAWORK® UP, DURABLE is launching a pioneering LED floor lamp that combines powerful workspace and room illumination with energy-efficient technology, high-quality design and extreme flexibility. As the successor to the previous VITAWORK® lamp, the latest generation complements the existing range of table and floor lamps, providing ideal lighting solutions for modern office and workplace concepts.



#### Aesthetics meet function for modern worlds of work

The VITAWORK® UP has been specifically designed to meet the needs of diverse working environments: co-working spaces, shared desk zones, combi-offices and open-plan areas benefit from its modular usability, flexible positioning and high-quality light. The flat, U-shaped base is ideal for standard desks while the minimalist design ensures that the lamp blends in aesthetically with any interior.



### Efficient lighting technology for focussed work

The combination of direct and indirect light creates well-balanced illumination for both rooms and workspaces. Thanks to innovative nanotechnology, the light is directed asymmetrically and glare-free exactly where it is needed, without any annoying shadows or reflections.



Compared to previous models, VITAWORK® UP provides:

- more light output with improved energy efficiency
- a technology UPgrade for precise lighting control
- improved ergonomics and visual comfort
- a clearly structured product portfolio with three models (12 EU, 14 HCL EU, 17 EU)

### Smart controls and sustainable efficiency



The lamp features a user-friendly, intuitive touch panel for separate control of the direct and indirect lighting components. Features such as infinite dimming, five brightness levels and a choice of colour temperature between 2,700 and 6,500 K (HCL model only) make it easy to customise settings for any working situation.

Intelligent presence and daylight sensors ensure that the lamp is only turned on when someone is nearby and that its brightness is automatically adjusted to the ambient lighting – for maximum energy savings, reduced carbon emissions and lower operating costs.



This means that the VITAWORK® UP not only complies with DIN EN 12464-1 but also helps companies to meet their ESG targets.

“Light is a key factor for performance, health and employee satisfaction.”

Studies show that around 49% of building owners are prepared to pay more for property that has been designed in a way that is proven to be beneficial to health. (WSGN ergänzen)

Source: WGSN Report ‘Key Trend: Workplace Wellness’, Catrin Davies, 24 May 2024

#### Areas of use and advantages at a glance:

##### Areas of use

- Single, double and group offices
- Combi-offices and open-plan areas
- Desk-sharing and co-working spaces

##### Advantages

- Even, glare-free workplace illumination compliant with DIN and ASR 3.4 ( $UGR \leq 19$ )
- Flicker-free light thanks to high-quality LEDs
- Lamp requires few tools for installation and can be flexibly repositioned (cold device plug)



### Light quality that is fit for the future

The VITAWORK® UP is more than just a floor lamp – it is an integral part of future office design. It provides individual lighting solutions that support the health and productivity of employees, while being energy-efficient and fitting seamlessly into dynamic office environments. It is a true lighting UPgrade – for users, planners and investors alike.

VITAWORK® UP complements the existing LUCTRA® range of floor and table lamps, creating a holistic portfolio capable of transforming almost any office or workplace into a pleasant working environment into a pleasant and sociable working environment.



**About LUCTRA®:**

About LUCTRA®: LUCTRA® is the brand for good working light in the office or at home. For this purpose, the table, floor and mobile lamps included in the range provide light which not only illuminates, but also makes people happy, more efficient and simultaneously less tired. This works, because it transmits the right impulses for every situation.

To this end, the professional, biologically effective LED lamp system utilizes the latest scientific findings about the effect of light on human beings. It follows the principle of Human Centric Lighting, for short HCL, by focusing on human beings with their personal lighting needs for healthier and more efficient working and living. LUCTRA® light can almost perfectly simulate natural daylight and thus supports the user's personal inner clock.

LUCTRA® has already received numerous renowned design prizes such as the German Design Award and was brought to market in 2015 by the long-established company DURABLE Hunke & Jochheim GmbH & Co. KG. This company has been dedicated to professional work for more than a century: to its organisation, its processes and its equipment.

**Press contact:**

Martina Heiland - Head of Communication  
DURABLE Hunke & Jochheim GmbH & Co. KG  
Westfalenstraße 77–79, 58636 Iserlohn  
Phone: +49 (0) 23 71 66 22 65  
E-Mail: [martina.heiland@luctra.eu](mailto:martina.heiland@luctra.eu) · Web: [www.luctra.eu](http://www.luctra.eu)